

Polygon Digitizing in Google Earth

From the maps in Google Earth, you can digitize a polygon and save it to a KML file.

To do this,

- 1) Run Google Earth.
- 2) Find the map where your spray areas are.

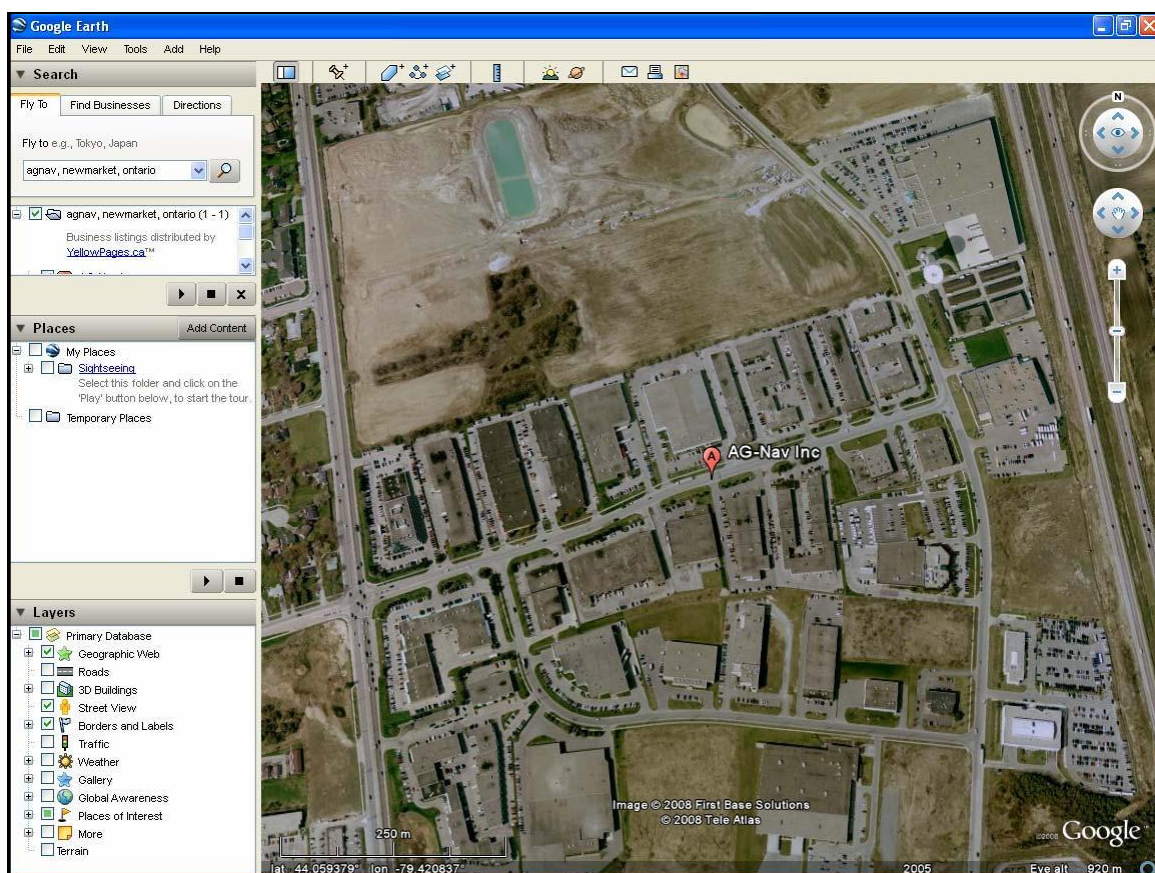


Figure 11- 1: Locate Map on Google Earth

- 3) Zoom in or out for best view of map.
- 4) From the Add menu of Google Earth, select Polygon. The New Polygon dialog box appears and cursor changes to a square icon. You can resize the dialog box to get more space for the map. Make sure your polygon is shown clearly.

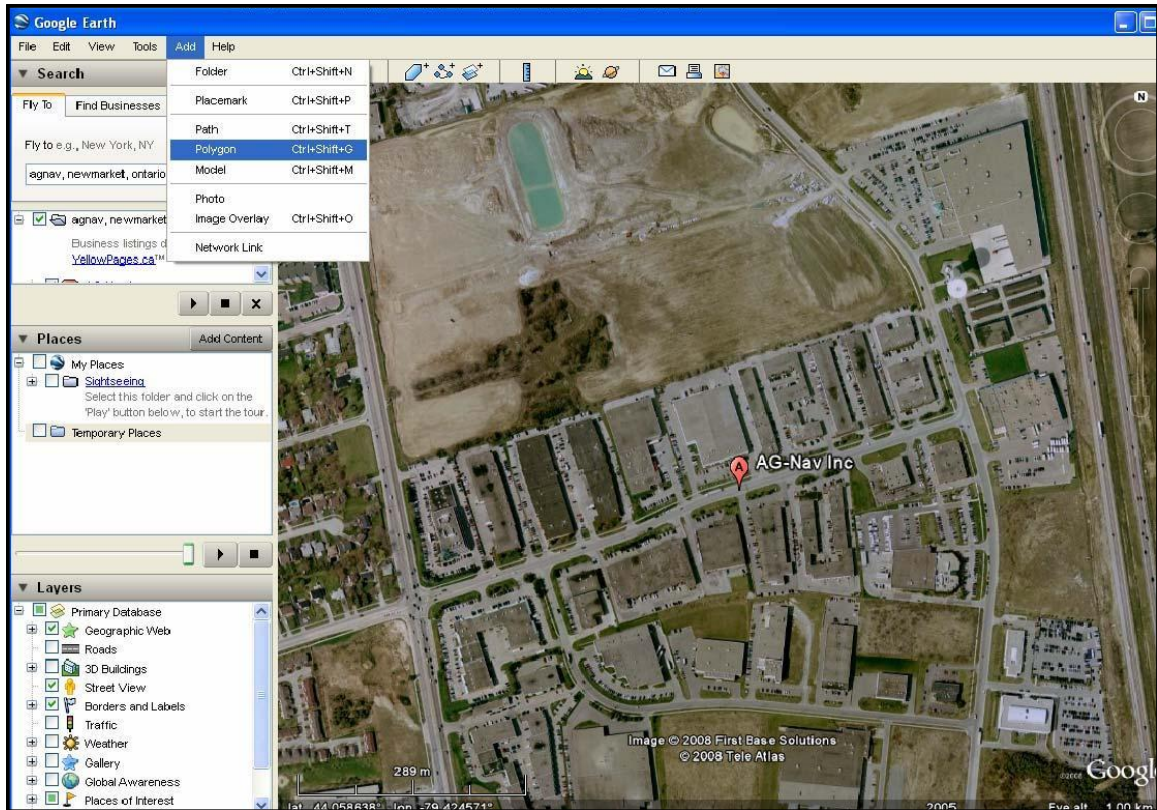


Figure 11- 2: Add Polygon

- 5) Enter the properties of polygon. For polygon or area name, the first 3 characters must be “spr” followed by a desired name. Do not use a space or special characters. You can use underscore “_” or dash “-”. As an example, we name the area “**sprTest1**”.

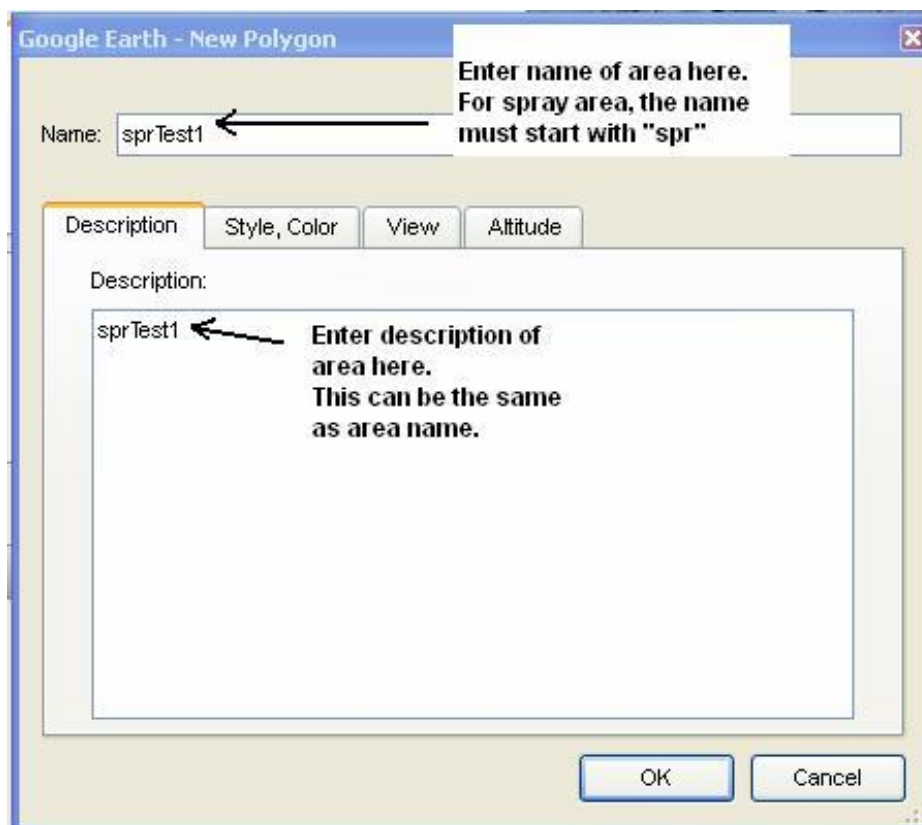
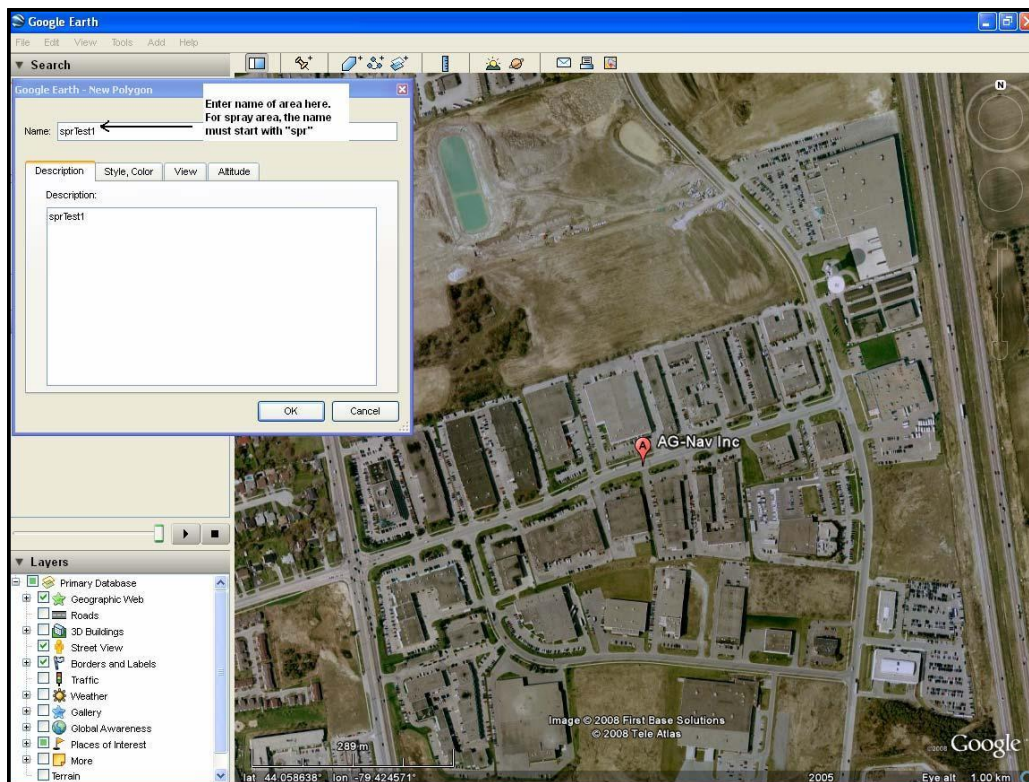


Figure 11- 3: Enter Polygon Name

6) For Description, you can enter the same as polygon name. Once the filename is entered **DO NOT PRESS OK YET!**

7) As default, the polygon will be painted white on the map. If desired, you can select the color of polygon but this is not necessary.

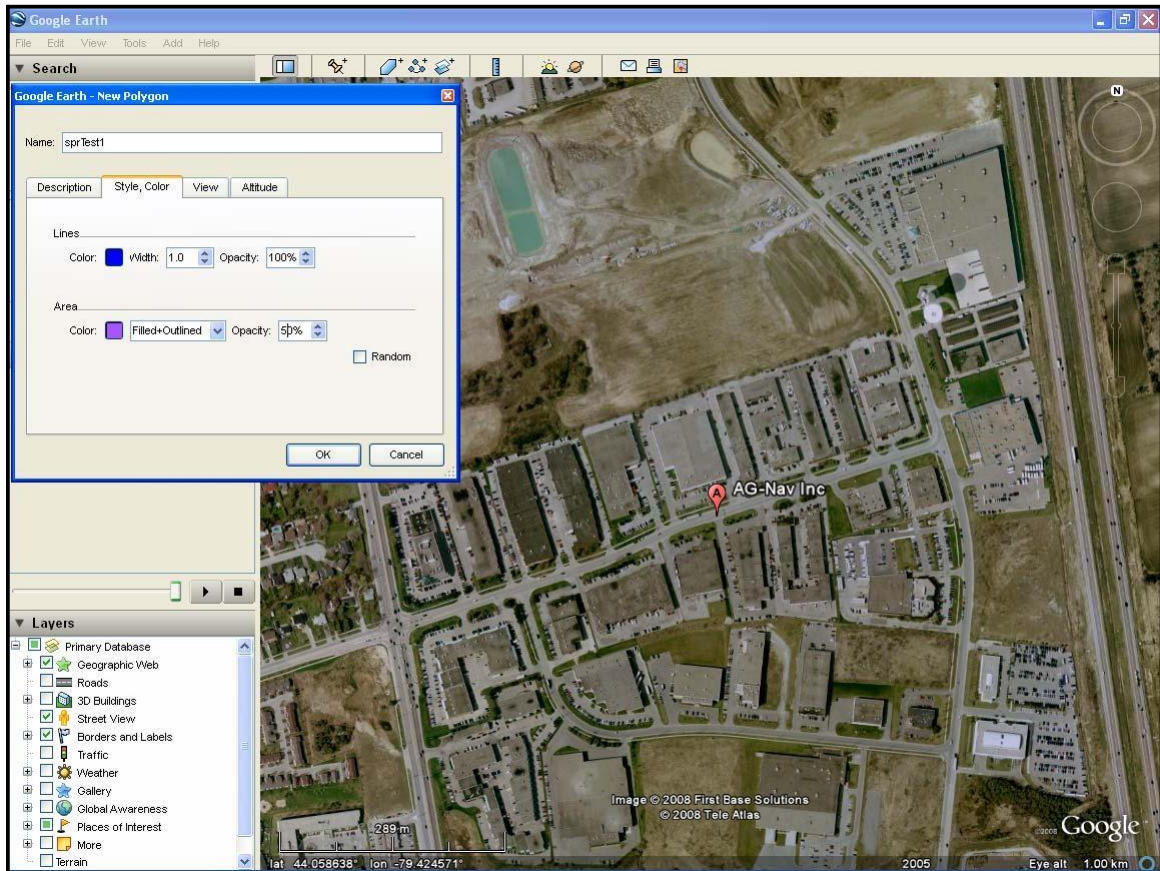


Figure 11- 4: Enter Color of Polygon

8) Now move the square cursor to the polygon. Click around the outline of polygon to add points. You should click the points in clockwise order.

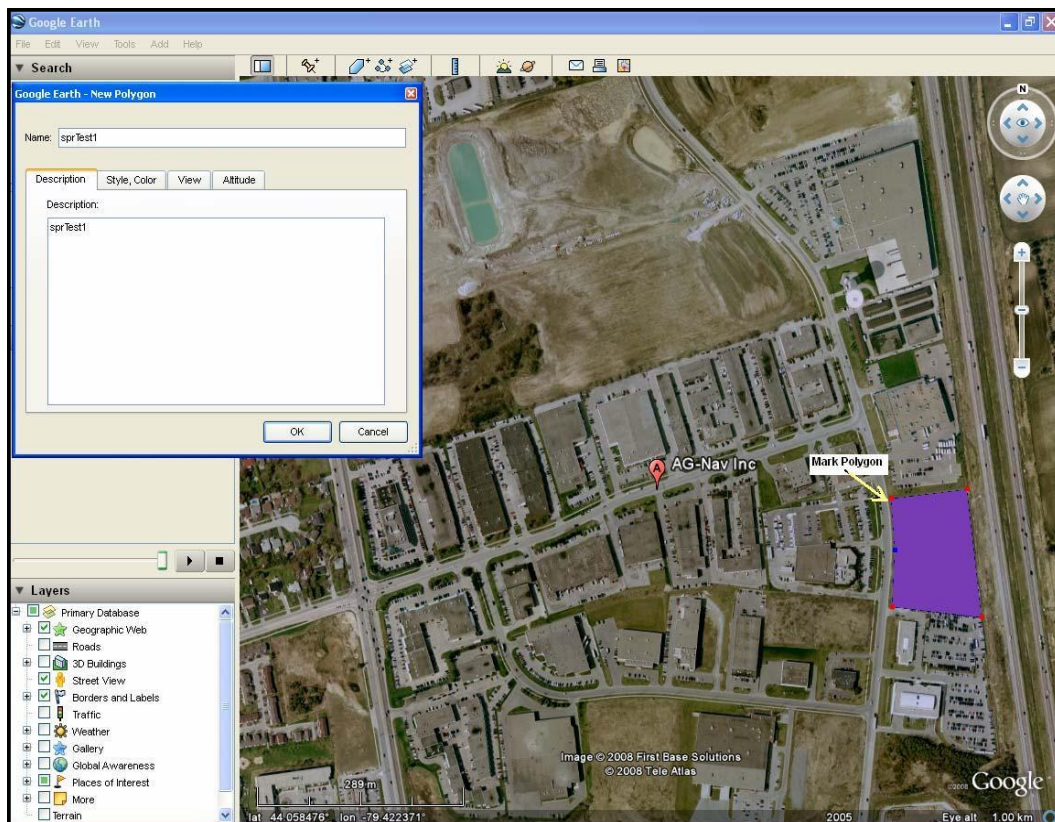


Figure 11- 5: Mark Polygon

- 9) When done, click the button “OK” on the dialog box to save the polygon.
- 10) The new polygon ‘sprTest1’ is shown in the Temporary folder in the left panel.
- 11) To save the polygon to a file, highlight the polygon name “**sprTest1**”.

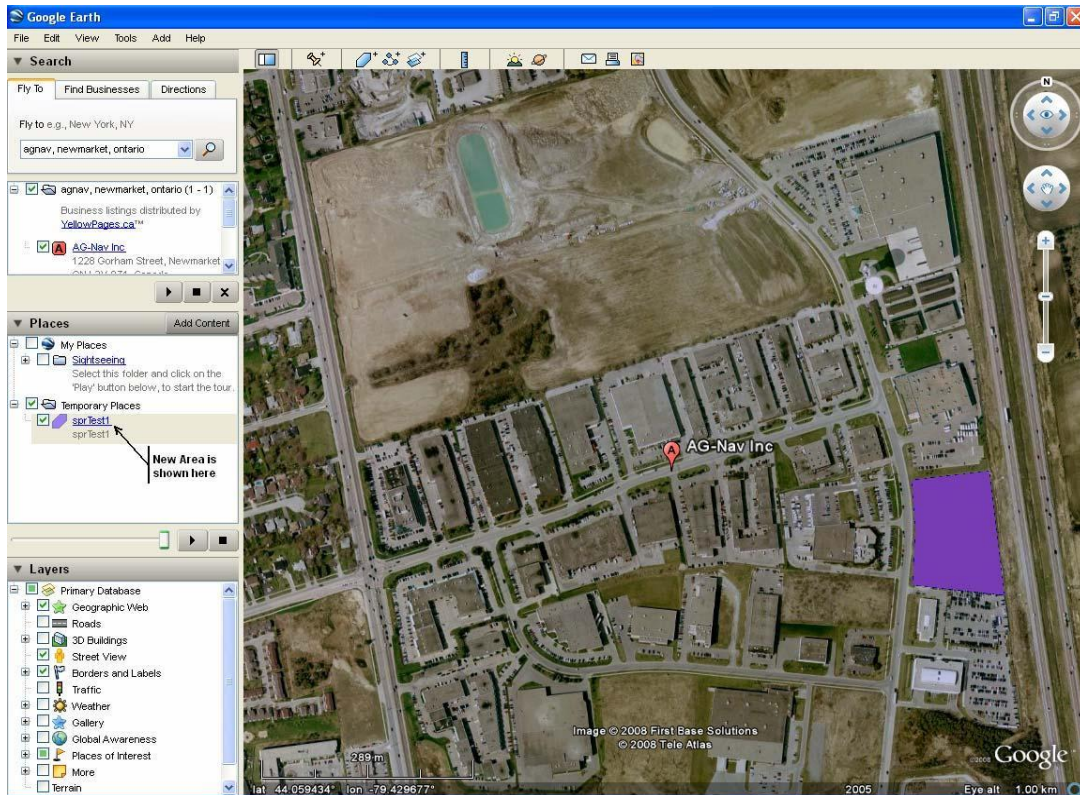


Figure 11- 6: Select Polygon to Save

12) Select File → Save → Save Place As

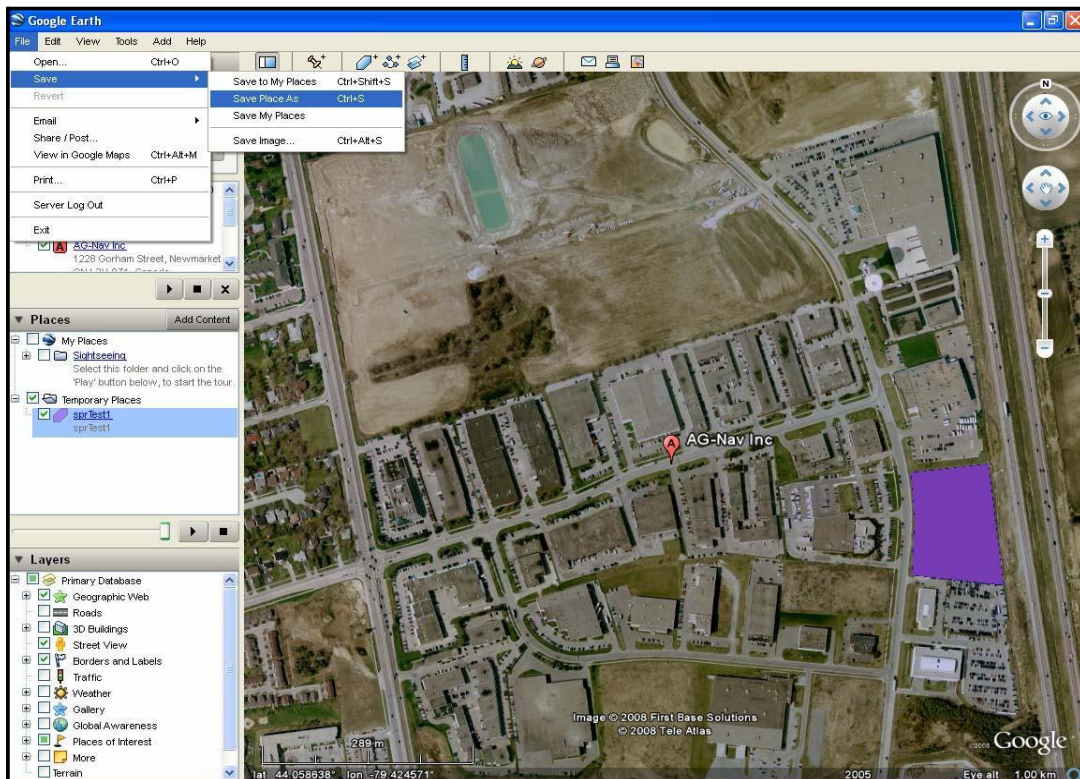


Figure 11- 7: Save Place As

- 13) Enter the KMZ file name. Then click Save. Note that you can also select to save the polygon to a KML file. With the KML file, it's easy to check the content of file if there is a problem. **YOU SHOULD KNOW WHERE YOU SAVE THE FILE.**

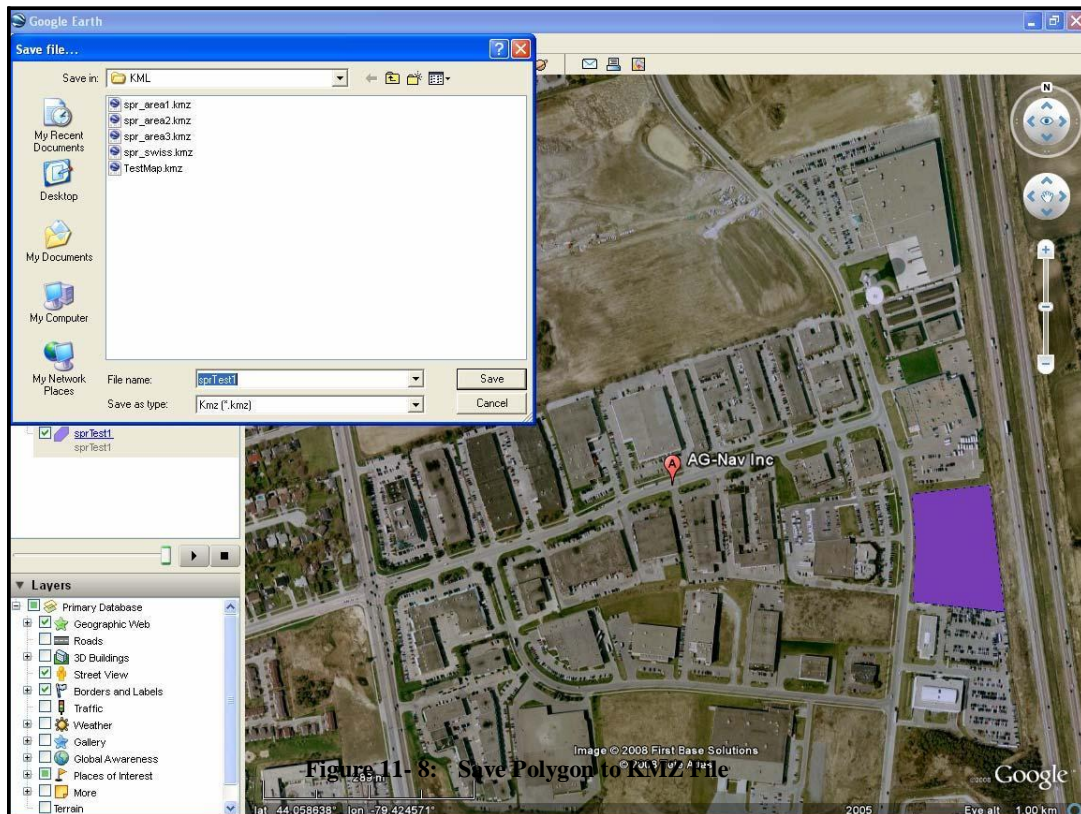


Figure 11- 8: Save Polygon to KMZ File

- 14) If you want to make another polygon, repeat steps 2 to 13.

If you wish to add an exclusion zone to your property please refer to the following page for steps on how to perform this action.

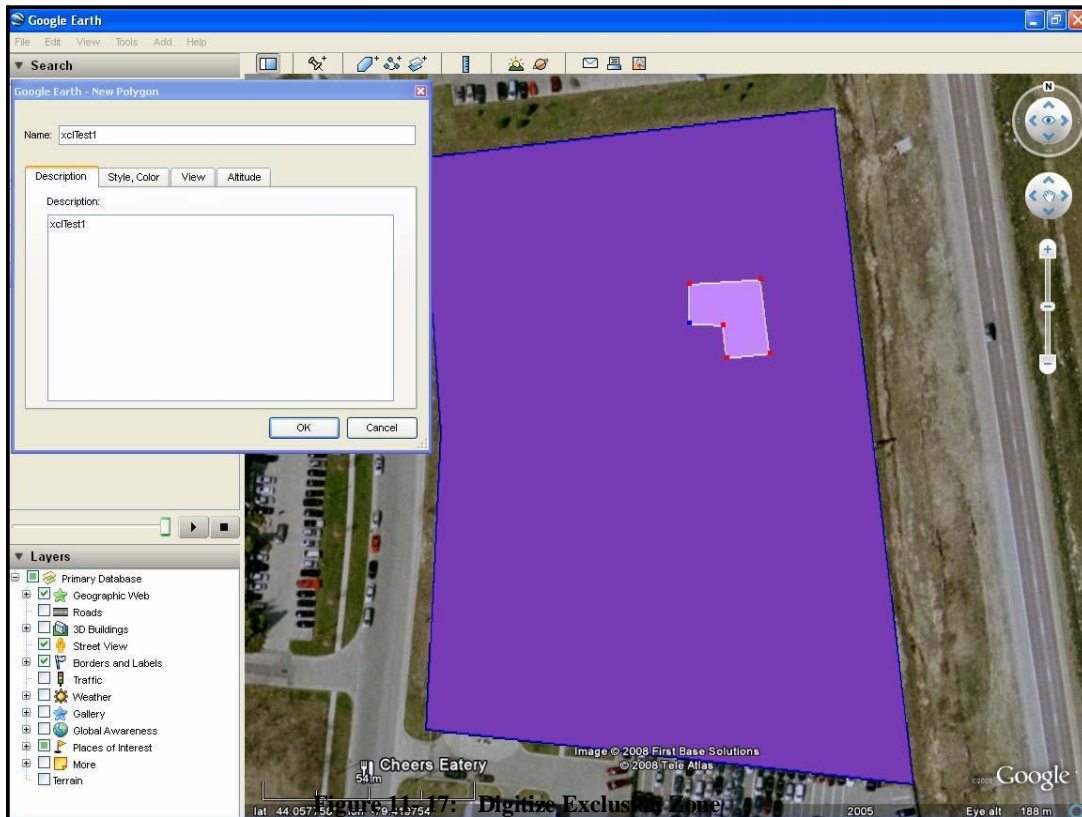
- 15) When all done, exit Google Earth.

Now that you have made your polygon shape and saved it to a location that you are familiar with please go to your email and add this file as an attachment and send it to us. We will be able to open this file and convert it to the necessary format and then can send you back a finished digitized copy for your approval!

Digitizing Exclusion Zones:

You can digitize exclusion zones from the maps in Google Earth. The procedure is the same as that of digitizing a polygon, except that the name of polygon must start with “xcl” instead of “spr”. For example, if the spray polygon is named “sprTest1”, the exclusion zone should be named “xclTest1”.

When you save the polygons, both spray zone and exclusion zone are saved in the same KML or KMZ file.



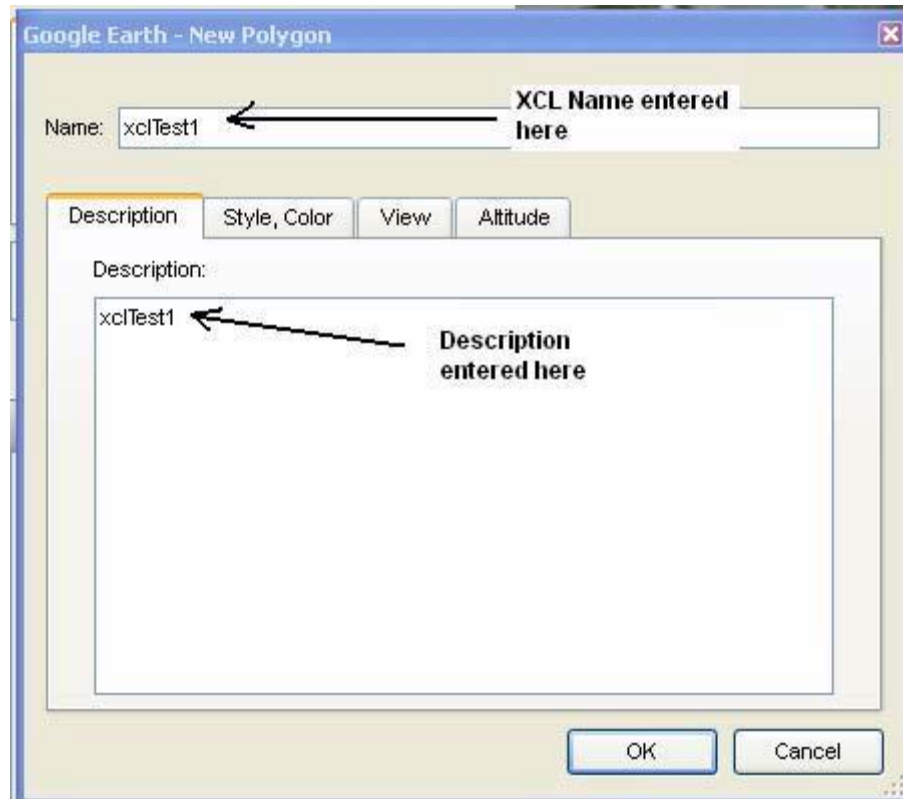


Figure 11- 18: Enter XCL Name

Once you have completed the exclusion zone. Again save the file to a known location and then email us the file.